

# WTOC 2025 BULLETIN 1



# Contents

WELCOME BY THE EVENT DIRECTORS	3
VENUE	4
ORGANISING TEAM	6
COMPETITION RULES	7
CLASSES	7
PARTICIPATION	7
TRAINING POSSIBILITIES	8
EVENT PROGRAMME	9
LOCATION OF VENUES AND EMBARGOED AREAS	10
TERRAINS AND PREVIOUS MAPS	11
ORGANISERS	13

## CONTACT INFORMATION



[info@wtoc2025.org](mailto:info@wtoc2025.org)



[www.wtoc2025.org](http://www.wtoc2025.org)



[www.facebook.com/wtoc2025](https://www.facebook.com/wtoc2025)



HU +36 302 510724 Zoltán Mihácz



SK +421 908 226 250 Dušan Furucz

## Welcome by the Hungarian event director



Dear orienteering friends,

In the name of the organizers of the World Trail Orienteering Championship 2025, I would like to invite all the competitors, collaterals, viewers and anyone who is interested to Hungary, Sümeg city.

The WTOC will be organized in an area, which already housed a lot of international orienteering competitions.

Many can know the traditional Hungarian race: Hungária Cup, which also was in this area a couple of years ago.

We hope that the terrain and the courses will give everyone a memorable experience.

In these years Hungary hosted a lot of events in every orienteering discipline, but this will be its first joint WTOC.

We believe that with our Slovak sport mates together, we will organize a World Trail Orienteering Championship with the one of highest standards.

Paskuj Mátyás

Hungarian Event Director

## Welcome by the Slovak event director



Dear orienteering friends,

I would like to invite all competitors, officials and guests on behalf of the organizing committee, Slovak orienteering association and orienteering club Farmaceut Bratislava to the World Trail Orienteering Championships 2025 in Slovakia and Hungary.

The Slovak orienteering association has great experiences with organizing important events in various orienteering disciplines and we are believing that together with our Hungarian friends we will organize fair and nice competition with the possibility to explore beauty and interesting places in Slovakia.

I would like to apologize that you may face a little bit higher requirements for traveling, but each competition will be held in different type of terrain with great demands on TrailO skills. You will meet flat, hilly and steep slopes, different vegetation mostly in non-urban areas.

Hana Šmelíková

Slovak Event Director

## Venue

The World Trail Orienteering Championships will take place in two countries for first time in IOF history.

The first part of World Trail Orienteering Championships 2025 will be held around Sümeg, north from Balaton, in Balaton highlands in Hungary.



The Balaton highlands are an uneven plateau rising 150–200 meters above the lake. The Tapolcai basin is made up of a Miocene limestone plateau extending like a bay into the dolomite scene, on which in some places basalt was poured or basalt tuff fell. As a result of the erosion, peculiarly shaped witness mountains were formed.

The area around Sümeg has been inhabited since the Bronze Age. In the 13th century, the castle, which is the symbol of Sümeg, was built on top of the 270 m high limestone hill towering over the town. The castle was primarily of military importance during the Turkish wars. After the decline of its strategic importance and thanks to the destruction

of the Habsburg fortress, the castle fell into ruins. In the 19<sup>th</sup> century, Sümeg gained a reputation as an important place for the wine trade beyond Hungary. It acquired its city status in 1984.



Balaton is the largest lake in Central Europe and a defining element of Hungary's hydrography. Its shallow water, which warms up easily, makes it excellent for swimming and sports, its wildlife is extremely rich, and the landscape is unique in many ways with its varied volcanic cones.

<https://sumegvar.hu/en>

<https://visithungary.com/>

The second part will be held in Bratislava, the capital of Slovakia, and its neighbouring areas.



The Little Carpathians are a relative low and narrow mountain range, about 100 km long with very diverse relief. Geomorphologically, the Little Carpathians belong to the Alps-Himalaya System, the Carpathian Mountains sub-system. The mountains begin in Bratislava and continue about 100 km to the northeast. This territory is largely covered by deciduous forests with beech, common ash, sycamore maple and linden. There are a total of eight karst areas in the Little

Carpathians with great possibilities for orienteering. Since the Middle Ages, the area has been known for its wines and wine-making traditions.



Bratislava is the political, cultural and economic centre of Slovakia with a population of about 500,000 inhabitants and located in the southwestern Slovakia, at the junction of rivers Danube and Morava. Bratislava is very close to two other countries Austria and Hungary. Bratislava is historically tied with these countries and during long history it was a significant economic, cultural and political centre of Central Europe. You can find a lot of unique architecture, culture, history tradition, art, drinks, food and nightlife in this "small" city.

The individual races will be held in different regions of Trenčín and Trnava especially in municipalities Čhtelnica, Dolný Lopašov and Častá. These small villages are very beautiful with diverse nature. You can see the very flat forests change to rugged terrain forms or extremely steep slopes.

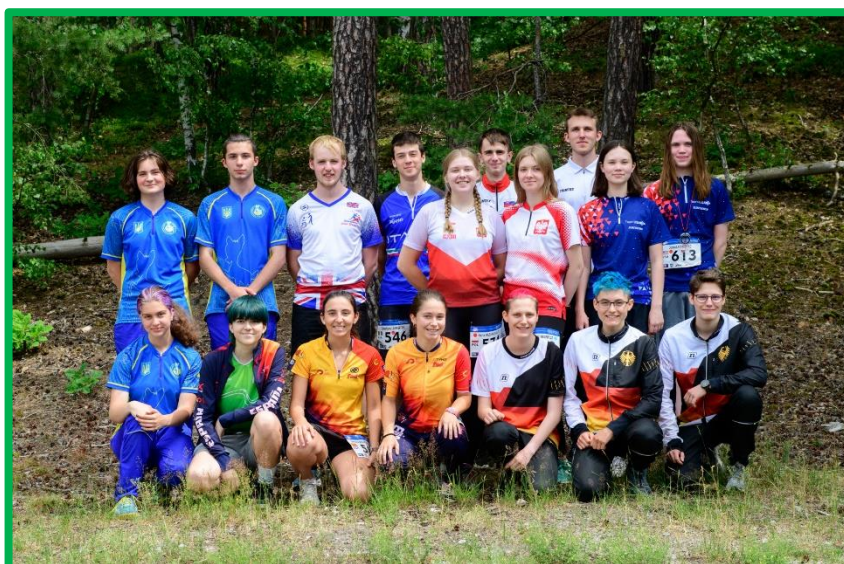
<http://www.visitbratislava.com>

<http://www.slovakiatouring.com>

## Organising team

The event will be organized by members of the orienteering clubs "Típo Tájfutó és Környezetvédő Egyesület" for Hungarian part and "TJ Farmaceut Bratislava" for Slovak part of WTOC, with the support of the Slovak Orienteering Association. Main officers are:

	<b>HUNGARY</b>	<b>SLOVAKIA</b>
Event Directors:	Mátyás PASKUJ	Hana ŠMELÍKOVÁ
Mappers:	Gábor FORRAI Miklós FORRAI	Dušan FURUCZ
Course Setter:	Zoltán MIHÁCZI	Dušan FURUCZ Ján FURUCZ
Finances :	Miklós BOGDÁNY	Ján MIŽÚR
HR and volunteers:	Mátyás PASKUJ	Hana ŠMELÍKOVÁ
Arena manager:	Zoltan KULCSÁR	Maroš BUKOVÁC
National Controllers:	Dušan FURUCZ	Zoltán MIHÁCZI
IOF Senior Event Adviser :	Per STÅLNACKE (NOR)	
IOF Assistant Event Adviser:	Petteri HAKALA (FIN)	



(c) WTOC 2023 – Dan Dvořáček

## Competition rules

The COMPETITION RULES FOR INTERNATIONAL ORIENTEERING FEDERATION (IOF) TRAIL ORIENTEERING EVENTS (Rules for the World Trail Orienteering Championships) valid from 1 January 2024 shall apply to the World Trail Orienteering Championships 2025. Copy of the Rules is available for download from the Rules section in the official IOF website (<https://orienteering.sport/trailo/competition-rules/>).

The following deviation of the Competition Rules applies:

There are not know any deviation according to Competition Rules.

## Classes

In the individual PreO competitions and in the TrailO Relay there is one O (Open) class and one P (Physically challenged) class. In the TempO competition there is a single Open class. (Competition rule WTOC 5.1)

All competitors, regardless of sex, age or physical ability/disability are eligible to be entered for a World Championship Open class competition. (Competition rule WTOC 5.2)

Only competitors who have a permanent disability that significantly reduces their mobility are eligible to be entered for a P class competition. Competitors for the P class eligibility must submit to the IOF Office, at least three months before the competition, an eligibility form (available at [www.orienteering.sport](http://www.orienteering.sport)) completed by the athlete, a doctor and their Federation. When approved, a certificate authenticating their P class eligibility will be issued. The eligibility certificate must be sent to the event organiser with the final entry form. (Competition rule WTOC 5.3)

## Participation

All competitors represent a Federation. Each Federation may enter a team of an unlimited number of competitors. (Competition rule WTOC 6.5)

Each Federation may enter up to a maximum of four competitors of any physical ability for the PreO competition in the O class, a maximum of four eligible competitors for the PreO competition in the P class and a maximum of four competitors for the TempO competition.

In addition to the above the following may be entered by their Federations:

- The current Regional Champions (if the Regional Championship was held after the previous WTOC) and the current World Champions in their respective classes
- 2 juniors (aged 20 years or younger at the end of the calendar year) in each class and format
- The top 15 in the World Ranking list (as it stands 3 months prior to the first race of the event) with a maximum of the 2 best-ranked from each Federation for the PreO O class and TempO.

- The top 15 in the World Ranking list (as it stands 3 months prior to the first race of the event) with a valid (spanning the WTOC) eligibility certificate with a maximum of the 2 best-ranked from each Federation for the PreO P class.

These extra places are personal. Each criterion is evaluated separately with no regard to the outcome of any other criteria. (Competition rule WTOC 6.6)

For the TrailO Relay, a team consists of three competitors. Each Federation may only nominate one team in each class, O and P. Incomplete teams and teams with competitors from more than one Federation are not allowed. (Competition rule WTOC 6.8)

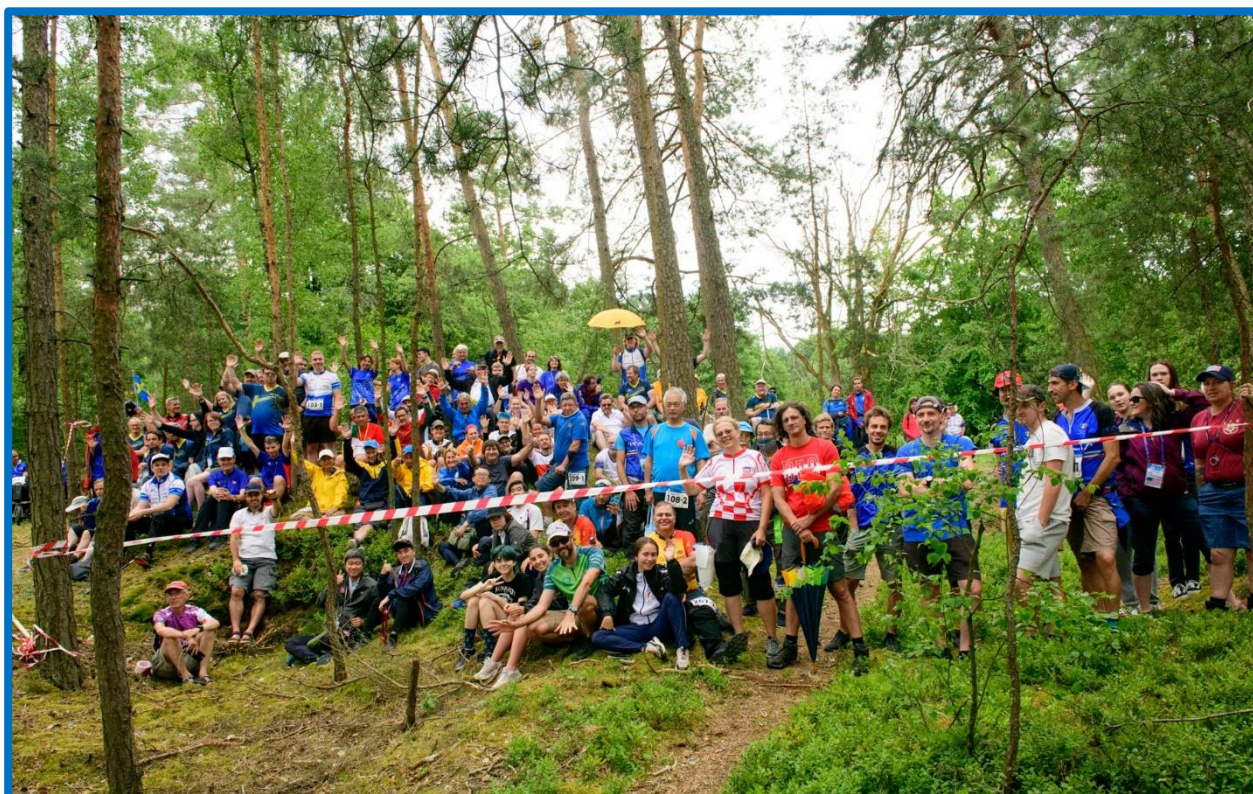
Disabled competitors requiring physical assistance from an able-bodied escort must bring their own escort. The organiser is only required to provide extra assistance at difficult section, e.g. steep up- or downhill sections. Escorts must not assist in any way with the map reading, control site identification, analysis or selection process, nor disturb the concentration of any competitor. (Rule WTOC 6.9)

A competitor must have a valid IOF Athlete Licence. (Competition rule WTOC 6.11)

## Training possibilities

On request, WTOC organizers can provide maps and opportunities for team preparations for the WTOC 2025 on similar or near terrains.

More information about training possibilities will be published on the official WTOC website.



(c) WTOC 2023 – Dan Dvořáček

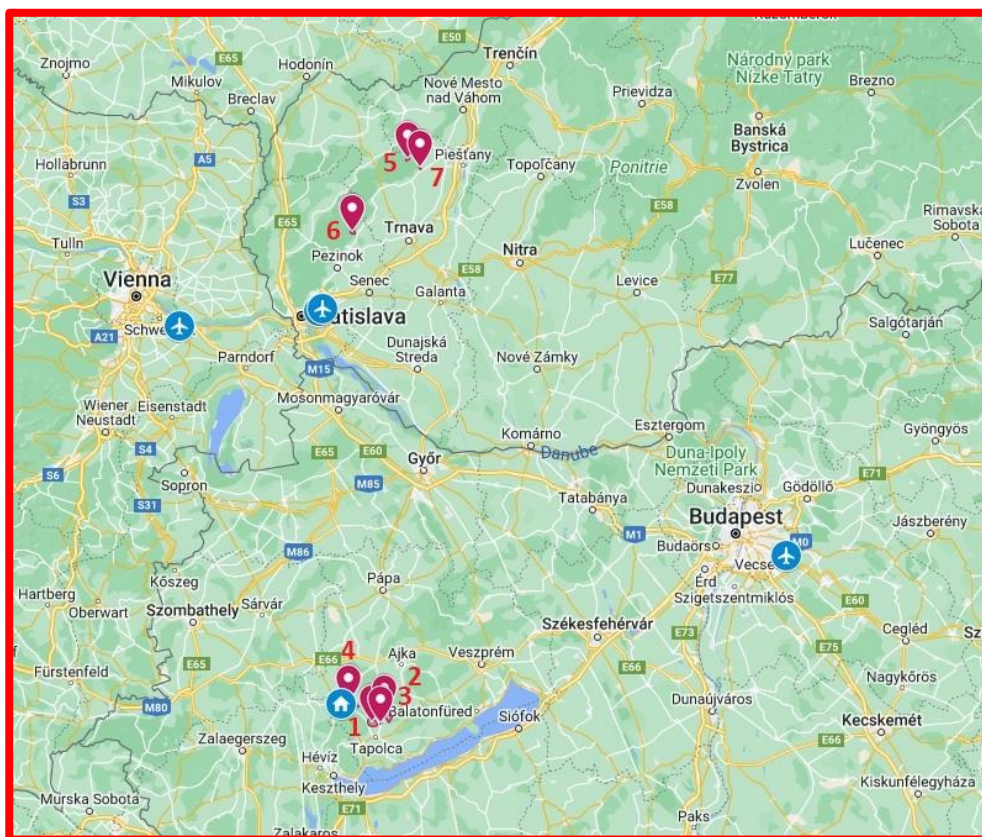


## Event programme

Date	Event	Location
Tuesday, August 26	Model Opening Ceremony	Sáska (HUN) Sümege (HUN)
Wednesday, August 27	PreO - Day 1	Zalahaláp - Ódörög (HUN)
Thursday, August 28	PreO - Day 2	Sümege (HUN)
Friday, August 29 (National Holiday)	Model Event	Častá, Červený Kameň (SVK)
Saturday, August 30	Relay	Dolný Lopašov (SVK)
Sunday, August 31	TempO (Q+F) Closing Ceremony & Banquet	Častá, Červený Kameň (SVK) Bratislava (SVK)



## Location of venues and Embargoed areas



1. Ódörög - PreO Day 1
2. Sáska - PreO model
3. Zalahaláp – backup
4. Sümeg - PreO Day 2
5. Vítek - backup
6. Červený Kameň – TempO
7. Dolný Lopašov – Relay

All embargoed areas are out of bounds for all potential WTOC 2025 team members (competitors, officials, escorts, etc.) and any other person who may influence the results of the competitions by any knowledge of the terrain (Competition rule 17.2).

You can find more information about [embargoed areas](#) on the official website.

## Terrains and previous maps

### 1. Ódörögd - PreO Day 1 (46.94136, 17.42672)



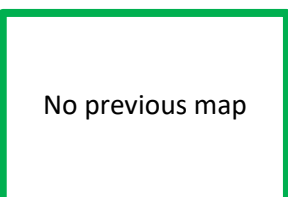
Old maps: 1:10000, e=5m, 2018, ISSOM, 1:4000, e=5m  
 Open grassland area with gentle relief. The grassland areas are interspersed with small patches of forests and groves. There are lots of negative topography elements. Terrain is 200-260 m above sea level.  
 Last FootO and TrailO competition in year 2018.

### 2. Sáska - PreO model (46.93849, 17.47869)



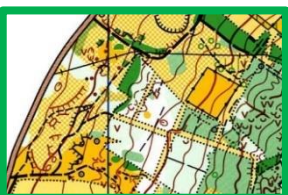
Old map: 1:10000, e=5m, ISSOM  
 Open grassland area with low-sloping relief elements. There are scattered trees and groups of trees in these grazed fields. Terrain is 200 - 270m above sea level.  
 Last FootO and TrailO competition in year 2020.

### 3. Zalahaláp - backup (46.92237, 17.45787)



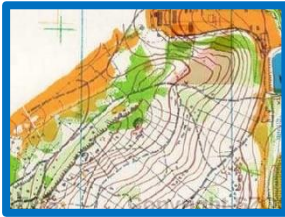
Old map: N/A  
 Abandoned basalt mine, there was intensive mining in the area between 1912 and 1980, so the top of the mountain was completely washed away. This area is characterized by remaining rocks, ledges and barren ravines. Terrain is 250 - 360m above sea level.  
 Never used for orienteering.

### 4. Sümeg - PreO Day 2 (46.98592, 17.28242)



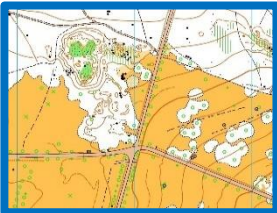
Old map: 1:10000, e=5m, 2002, ISOM  
 Open, semi-open and overgrown areas that bear traces of former mining activity. Terrain is 200 - 350m above sea level.  
 Last FootO competition in year 2003. Never used for TrailO.

**5. Vítek - backup** (48.61846, 17.58489)



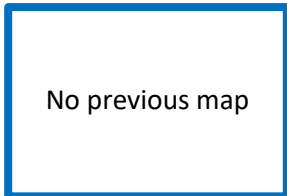
Old map: 1:15000, e=5m, 1992, ISOM  
 A typical Little Carpathians prominent rocky ridge and valley. Territory largely covered by deciduous forests with beech, common ash, sycamore maple and linden. Terrain is 250 - 350m above sea level.  
 Last FootO competition in year 1992.  
 Never used for TrailO.

**6. Červený Kameň - Tempo** (48.39502, 17.33238)



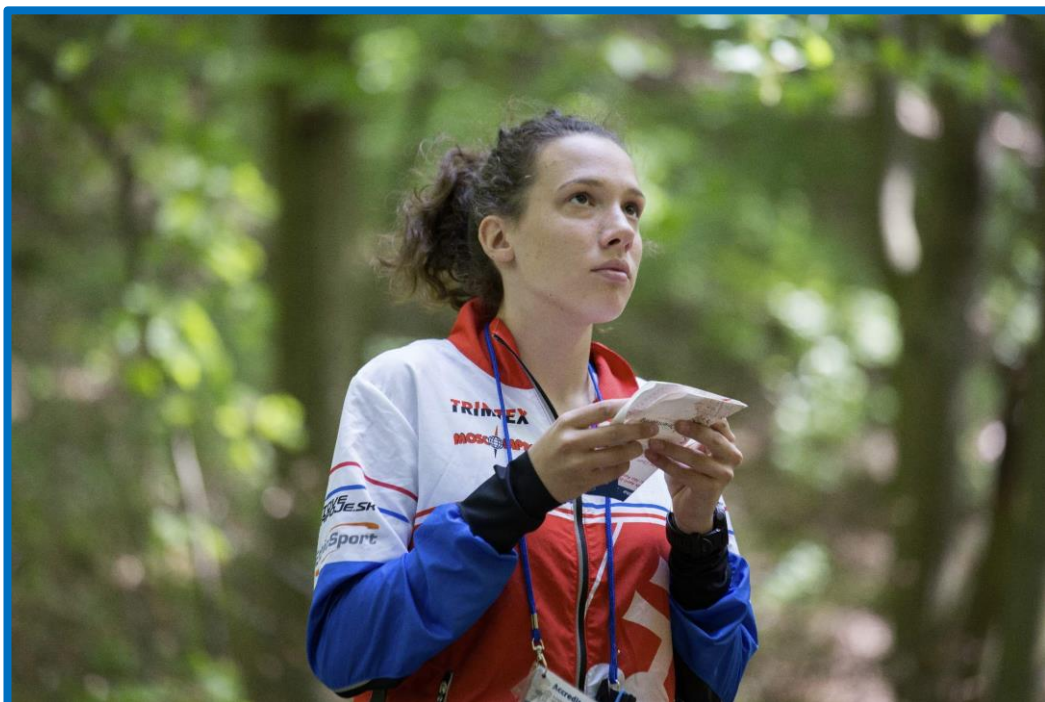
Old maps: 1:4000, e=2m, 2017, ISSOM  
 Deciduous forests with areas of small stones and contour details, castle park. Terrain is 300 - 400m above sea level.  
 Last TrailO and FootO competition in year 2017.

**7. Dolný Lopašov - Relay** (48.58939, 17.63132)



Old map: N/A  
 Semi open area of old quarry and valley with steep slope on one side. Terrain is 200 - 250m above sea level.  
 Never used for orienteering.

The map examples are linked with previous orienteering maps. You can find more recent information about any previous orienteering maps in the section of [embargoed areas](#) on the official website.



## Organisers



Tipo TKE  
Pozsonyi út 52  
1133 Budapest  
Hungary

ŠK Farmaceut Bratislava  
Orechová 3034/10  
90031 Stupava  
Slovakia



**WTOC 2025**  
SLOVAKIA HUNGARY



**WTOC 2025**  
SLOVAKIA HUNGARY